

Words understood by the AIBO® Entertainment Robot

In the following cases, the AIBO robot may not understand what you say.

- While the AIBO robot is emitting sounds or moving, it cannot hear you easily.
- The AIBO robot may not recognize several words depending on its mode or condition.
- Even though the AIBO robot understands you, it may choose not to respond or do as you say.
- The AIBO robot cannot hear you if its surroundings are noisy. Call out to the AIBO robot under quiet conditions.
- If you say a word whose pronunciation is unclear, the AIBO robot cannot recognize it. Speak very clearly.
- When the AIBO robot is at the puppy stage, it can only understand a limited number of words. For details about the words that the AIBO robot can understand when it is at the puppy stage, refer to page 72 of the "User's Guide (Basic)" for the AIBO Entertainment Robot ERS-7.



Calling the AIBO robot's name

AIBO./Registered name (the name you gave AIBO).
The AIBO robot reacts when it is called. Even after the AIBO robot learns its own name, it reacts when you call it "AIBO".

Teaching the AIBO robot

Name registration.
Give a name to the AIBO robot.
What's your name?
The AIBO robot says the name you gave to it in its own voice.
Owner registration.
You can teach the AIBO robot its owner's (your) name.
What's your owner's name?
The AIBO robot says its owner's name (your name) in its own voice.

Praising, scolding, or encouraging the AIBO robot

Good AIBO./Good boy./Good girl.
These words are for praising the AIBO robot. They have the same effect as when you praise the AIBO robot by touching the sensors on the back of the AIBO robot.
Don't do that.
These words are for scolding the AIBO robot. They have the same effect as when you scold the AIBO robot by tapping the sensors on the back of the AIBO robot.
Go for it./How cute.
These words are for encouraging the AIBO robot.

Greetings

Good morning./Hello./Good night./Bye bye./Good bye./I'm here./ Say hello./Shake hands.

Self-charge

Go to the Station.
The AIBO® Entertainment Robot starts the procedure for self-charging.

Taking a picture

Take a picture.
The AIBO robot takes a picture with its built-in camera.

Playing with the AIBOne toy

Find your AIBOne.
The AIBO robot looks for the AIBOne toy.
Bring me your AIBOne.
When you say this while the AIBO robot is holding the AIBOne toy in its mouth, the AIBO robot comes to you.

Playing with the ball

Find your ball.
The AIBO robot looks for the ball.

Wake-up setting

Set alarm.
Lets you set the wake-up function ON or OFF.

Moving

Come here./Over here./Sit down./Stand up./Lay down./Turn right./ Turn left./Walk around./Go forward./Go back.

Questions for the AIBO robot

Are you sleepy?/Are you tired?/Are you bored?/How are you?
The AIBO robot shows its current condition with its face lights.
Are you hungry?
The AIBO robot shows the remaining battery power level by the number of face lights. The more lights are lit, the more power is still left.
What's your AIBOne skill level?
What's your pink ball skill level?
What's your walking skill level?
The AIBO robot shows its state of progress with the face lights.

Special actions

Let's dance.
The AIBO robot shows you its dance repertoire.

* For information on words understood by the AIBO robot when you are using the wireless LAN function, refer to the "User's Guide (PC-Network)" for the AIBO Entertainment Robot ERS-7.

SONY

ERS-7 Quick Guide

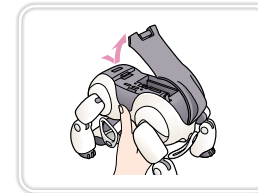


Start!

First insert the battery and AIBO MIND software "Memory Stick™" media into the AIBO® Entertainment Robot and set up the Energy Station.

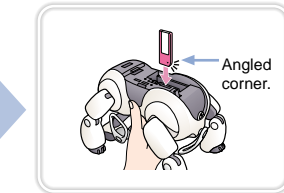
Open the cover.

Securely hold the body of the AIBO robot from above, turn it upside down, and open the stomach compartment cover.



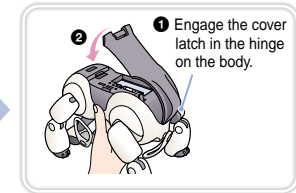
Insert the "Memory Stick" media into the AIBO robot.

With the arrow pointing down and the angled corner facing the AIBO robot's tail, insert the AIBO MIND software "Memory Stick" media into the AIBO robot until it is flush with the body.



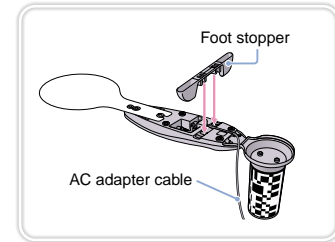
Insert the battery and close the cover.

Hold the battery with the connector facing downward, then insert it into the slot until you hear it click into place, and close the cover.



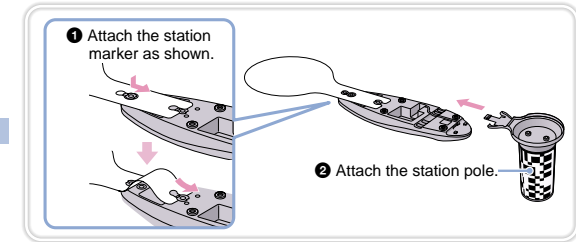
Install the AC adapter cable and foot stopper.

Route the AC adapter cable along the wire guides and attach the foot stopper.



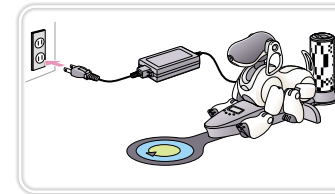
Install the station marker and station pole.

Attach the station marker first, followed by the station pole. (If you don't want to use the self-charging function, these attachments are not necessary.)



Charge the AIBO robot.

Plug the AC adapter into an AC outlet, and place the AIBO robot on the Energy Station. (For information on appropriate locations to place the Energy Station, refer to the "User's Guide (Basic)".)



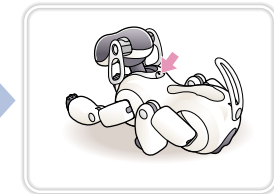
Place the AIBO robot on the floor in this position.

Place the AIBO robot on a flat, non-slippery surface, such as a low pile carpet with a hard nap.



Press the Pause button.

The Pause mode ends and the operation light turns green. In a moment, the AIBO robot will automatically begin moving!



Printed on recycled paper
Printed in Japan © 2003 Sony Corporation



* 4 6 7 9 8 9 3 1 1 * (1)

The AIBO® Entertainment Robot feature and mode map

When the AIBO robot is in Autonomous mode, all the activities and settings shown below are possible. When the AIBO robot is in Station mode (when it is awake), all the activities and settings shown below except those marked with an asterisk (*) are possible.

